

# Welcome

## Message from the Principal



Dear Parent and Pupil,

Welcome to The Eastwood Academy. Unfortunately, due to the current restrictions, we will not be able to meet with you on 28<sup>th</sup> June for our annual Open Evening. Although a presentation cannot replace this experience, I have attempted to provide a broad overview which I hope you find useful. It is also my intention, again restrictions permitting, to offer tours in the Autumn Term to allow you and your child to visit the Academy and experience all that it offers.

Best wishes,

A handwritten signature in blue ink, appearing to read 'N. Houchen'.

Mr. N. Houchen

# Open Evening 2021



*Believe, Succeed, Together*



# Leadership

## Academy Leadership



Front row from left to right: Vice Principal, Mr. D. Piercy, Principal, Mr. N. Houchen, Vice Principal, Mr. C. Niner

Back row from left to right: Assistant Principal, Mr. P. Barrett, Assistant Principal, Mr. M. Cartlidge, Assistant Principal, Mr. S. Sterling, Assistant Principal, Mrs. J. Schmid, Assistant Principal, Mrs. Hodgson-Clark, Assistant Principal, Mr. Y. Moyet

The SLT have a long-established association and strong emotional connection with the Academy.

The Principal has been at the school since May 2000 and the Headteacher from September 2010.

# Leadership

## Student Leadership Team



The Academy is firmly committed to involving pupils in the leadership and development of the school. To this end, the Academy has a Student Leadership Team, including a Head Boy, Head Girl, Deputy Head Boy, Deputy Head Girl and Senior Prefects who are appointed through a rigorous application and interview process.

The Academy has a well established Prefect System which reflects our policy of giving children responsibility. This system involves staff and pupils working together and encourages the development of initiative, reliability and maturity. In this way, the Prefects are given an important role in the Academy and provide a strong support network for the younger pupils.

# Academy Ethos

‘Believe, Succeed, Together’



An uncompromising belief that all pupils can and will succeed in a learning community which supports and values everyone and their achievements.

*‘You and your senior colleagues have led the school with determination, consistency and rigour to ensure that the school lives up to its stated motto of ‘Believe, Succeed, Together’. Ofsted.*

## Key Performance Measures

Locally, the Academy is the highest performing non-selective school and regularly outperforms the selective schools. Nationally, the Academy has been in the top 10% of schools over the last 3 years.

	2018	2019	2020	Disadvantaged	Non Disadvantaged	Low	Middle	High	EHCP	SEND Support	No SEND	Most Able	Male	Female
English	89%	86%	92%	85%	95%	58%	93%	99%	100%	71%	95%	100%	93%	93%
Maths	95%	88%	93%	88%	95%	50%	94%	100%	50%	86%	95%	100%	96%	91%
English and Maths	88%	82%	90%	80%	93%	33%	91%	99%	50%	71%	95%	100%	93%	91%
EBacc APS	4.84	4.64	5.09	4.59	5.24	3.15	4.34	6.22	3.00	4.24	5.17	6.79	4.94	5.25
Attainment 8 (A8)	53.10	51.58	55.48	50.22	56.99	34.25	48.61	66.41	33.50	45.00	56.61	72.50	53.71	57.32
Progress 8 (P8)	0.60	0.46	0.70	0.41	0.78	0.69	0.65	0.80	0.70	0.30	0.73	0.57	0.47	0.95

## Academy Performance

	2018		2019		2020	
	National	Academy	National	Academy	National	Academy
Art	75%	94%	75%	71%	86%	81%
Business Studies	65%	89%	66%	84%	80%	94%
Computer Science	61%	60%	63%	80%	80%	-
Citizenship	65%	84%	66%	79%	75%	88%
Drama	74%	65%	74%	88%	87%	92%
English Literature	74%	86%	73%	83%	79%	92%
English Language	70%	80%	71%	80%	71%	92%
French	70%	74%	70%	42%	82%	60%
Food Technology	63%	84%	64%	50%	78%	89%
Geography	65%	77%	65%	59%	75%	78%
Graphics	62%	54%	63%	56%	79%	79%
History	64%	79%	64%	86%	74%	90%
ICT	67%	71%	67%	75%	67%	77%
Mathematics	60%	95%	70%	88%	67%	93%
Music	75%	74%	76%	79%	89%	81%
Physical Education	70%	90%	70%	78%	87%	98%
Double Science	55%	73%	55%	71%	64%	78%
Sociology	-	-	-	-	78%	72%
Statistics	72%	95%	73%	97%	83%	100%
% subjects ~> National		77%		72%		78%

# Curriculum Intent

## Curriculum Intent

### Aims

In Education, the 'curriculum' is broadly defined as the '*totality of pupil experiences that occur in the educational process*'.

The intent of the curriculum is synonymous with many of the Academy's core aims:

- To provide a broad and balanced curriculum that is accessible to all pupils.
- To provide opportunities for all pupils to develop a high level of literacy and numeracy required for success in adult life.
- To broaden pupils' horizons through a range of spiritual, moral, social and cultural opportunities.
- To ensure that all pupils can thrive and develop as healthy individuals.
- To ensure that all pupils understand how to stay safe.
- To develop a strength of character, and resilience that will help pupils to overcome the challenges they are likely to encounter in adult life.
- To provide an appropriate range of opportunities and experiences to allow pupils to succeed in the next stage in their education, training or employment.

### Highlights

- A broad and balanced KS3 curriculum designed to develop competencies to prepare pupils for KS4.
- A broad and ambitious KS4 curriculum that provides **all** pupils with the opportunity to achieve the EBacc.
- An extended KS4 programme to allow pupils to develop a deeper understanding of subject specific knowledge and skills.
- A curriculum underpinned by a mastery approach.
- An extensive Personal Development and Enrichment (PDE) curriculum, designed to develop pupils' character, confidence, resilience, independence, leadership skills, preparation for life, and provide access to a wide and rich set of experiences.

# Curriculum

## Curriculum Structure

Pupils follow a broad and balanced curriculum at Key Stage 3 (Year 7-8).

Pupils follow a 3-year Key Stage 4 programme from Year 9-11. The programme is divided into two pathways – **core** (compulsory) and **personalised** (optional).

The Department for Education (DfE) recommends that pupils study between 8-10 high quality GCSEs. The Academy's KS4 programme provides pupils with the opportunity to gain up to 10 GCSEs.

**All pupils have the opportunity to achieve the Ebacc - [DfE EBacc Guidance](#)**

Curriculum Pathway	Subject	Course
Core	English Language	GCSE
	English Literature	GCSE
	Mathematics	GCSE
	Combined Science	GCSE
	Citizenship	GCSE
	French	GCSE
	Personal Development and Enrichment	Non-GCSE
	Recreational Physical Education	Non-GCSE
Personalised	Art	GCSE
	Business Studies	GCSE
	Computer Science	GCSE
	Drama	GCSE
	DT Graphic Products	GCSE
	Food Preparation and Nutrition	GCSE
	Geography	GCSE
	History	GCSE
	ICT – (Creative iMedia)	Technical Award
	Music	GCSE
	Physical Education (P.E)	GCSE
	Religious Education (R.E)	GCSE
	Sociology	GCSE
	Statistics	GCSE



## Ofsted Inspection 2018-19

Ofsted



## Ofsted Report

Effectiveness of leadership and management	<b>Outstanding</b>
Quality of teaching, learning and assessment	<b>Outstanding</b>
Personal development, behaviour and welfare	<b>Outstanding</b>
Outcomes for pupils	<b>Outstanding</b>
Overall effectiveness at previous inspection	Good

### Summary of key findings for parents and pupils

#### This is an outstanding school

- The principal's clear, unwavering vision focuses on supporting pupils' high achievement across a wide range of pursuits. Staff implement the vision very well. As a result, pupils receive an outstanding education.
- Leaders at all levels are very skilled. They know what they do well, but they concentrate their energies on what they could still do better. Consequently, the capacity of leaders to continue to improve the school is high.
- Pupils make significant progress as they move through the school. They join the school with levels of attainment that are broadly average. By the time that they leave, their attainment is high and their progress is well above average.
- Leaders ensure that pupils are well looked after and that they are kept safe. Pupils are very happy to attend the school.
- The quality of teaching is outstanding. Teachers' subject knowledge is very strong, they question pupils effectively and they plan activities that are suitably challenging.
- Leaders and governors ensure that the school's curriculum is a key strength. Pupils have access to a very effective range of curricular and extra-curricular activities.
- Pupils' behaviour is excellent. They are supportive of each other and they develop very strong working relationships with their teachers. Pupils' attitudes to learning are a key strength of the school.
- Pupils play an important part in leading improvements in the school. Younger pupils aspire to take on roles of responsibility.
- Disadvantaged pupils and pupils with special educational needs and/or disabilities (SEND) are very well supported. Leaders use the additional funding for these pupils very effectively, and this ensures that they make strong progress.
- Governors have a clear and accurate view of the school's strengths. They provide leaders with effective support and challenge, which ensures that the school continues to improve.
- Since the previous inspection, leaders' actions have improved pupils' progress in modern foreign languages. However, their plans need to be developed further so that pupils make similar progress to that made in other subjects.
- Parents and carers are very positive about the school. However, some of them say that they do not receive helpful information about their children's progress.

# Sports Facilities

Mondo running track – the same as the one at Stratford which was used for the 2012 Olympics.



High specification basket ball court – the same as the one used in the Beijing Olympics.



Swimming pool – unusual for a secondary school.





# Southend West School Sports Partnership (SWSSP)

The Academy is the hub school for the Southend West School Sports Partnership which provides services for 54 schools in the borough of Southend.



## SWSSP



# National Status

## Top 10 List of Sporting State Schools



The Academy is consistently in the Top 30 List of Sporting State Schools as determined by *School Sport* magazine (top 1% in the country).

In 2019, the Academy was ranked 9<sup>th</sup> in the list.

Rank	School
1	Coopers Company & Coborn School
2	Northampton School for Boys
3	Aylesbury Grammar School
4	Woodlands School, Basildon
5	Aylesbury High School
6	Barking Abbey School
7	Calday Grange Grammar School
8	Dr Challoner's High School
9	The Eastwood Academy
10	Judd School

## Expectations - Uniform and Accessories



## Uniform and Accessories

- Black blazer and an Academy badge.
- Plain white shirt or blouse with a stiff collar. The shirt or blouse tails should be tucked inside the waistband of the trousers. The collar button of the shirt or blouse should be done up at all times.
- Plain black or white socks or plain tights.
- Sensible stout black leather shoes with heels not exceeding 3.5cm in height. Trainers (including sport-branded 'shoes') are not permitted.
- Clip-on Academy tie.
- Suitable ankle-length (not above the ankle) black school trousers with no distinctive styling or fashioning. 'Skinny trousers' and trousers with conspicuous belts/buttons/buckles/zips are not permitted.
- No jewellery, except for a wristwatch and one pair of plain gold or silver studs, with one stud in each ear lobe. Eyebrow bars, nose and tongue studs are not permitted. All excess jewellery will be confiscated and returned to the responsible adult in person or to the pupil at the end of half-term.
- No make-up in Years 7, 8 and 9. Years 10 and 11 may wear discreet make up, but nail varnish and conspicuous fake nails are not permitted.
- Extremes of hairstyle are not permitted e.g. two tone or vibrant hair colours, tramlines and hair cut to below a number 2.
- Jumpers, denim, leather and sports jackets and all types of hoodies are not permitted.
- Suitable dark coloured bag.
- Mobile telephones and other unnecessary electronic equipment are not permitted. Such items will be confiscated and returned to the responsible adult in person in accordance with the Education Act 2011.
- Equipment – Planner, subject books, blue/black pen, pencil, ruler, rubber, calculator and P.E kit.

# Behaviour for Learning



**Expectations:** Courtesy, civility, cooperation, consideration and respect.

**Rewards:** Certificates, stationery, vouchers, medals, special lunches, Jack Petchey Award and trips.

**Sanctions:** Pastoral supervision, detention and exclusion.



# Extra-curricular (Get Involved!)





# Admission Arrangements

## Admission Arrangements

### Published Admission Number (PAN)

The PAN or admission limit is **220** pupils for the academic year 2022-2023.

*The PAN was 220 for Year 7, Year 8, Year 9 and Year 10 and 200 for Year 11.*

If the number of applications for places at the Academy is **within** the PAN (undersubscribed), then the Academy will admit all pupils who apply.

If the number of applications for places at the Academy **exceed** the PAN, (oversubscribed), the following criteria will be applied, in priority order, to determine which children will be admitted:

### Admissions Criteria

1. Looked after children and children who were previously looked after.
2. Pupils who have a sibling on roll at the Academy at the time of application.
3. Selective admission (aptitude).
4. Children living inside the Academy's catchment area.
5. Children of staff employed by the Academy where the member of staff has been employed for two or more years at the time at which the application is made and/or the member of staff is recruited to fill a vacant post for which there is demonstrable skill shortage.
6. Children living outside the Academy's catchment area.

### Children with an EHCP

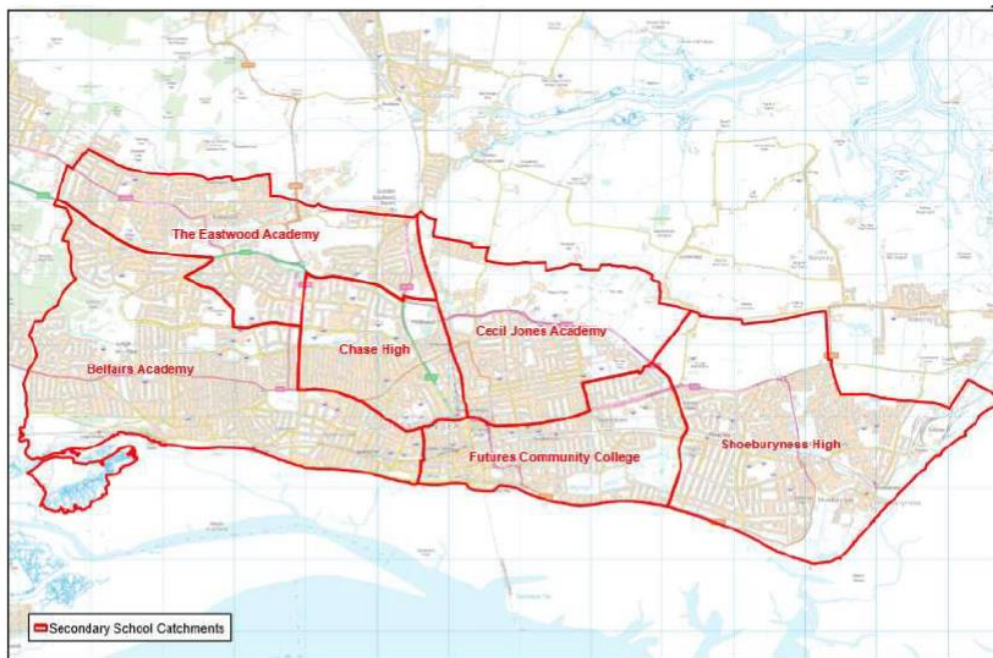
*Children with an EHCP follow a different process for admission. If the Academy is named in the Statement of Special Educational Need or EHCP, it must admit the child.*

Click here for the [Admissions Arrangements 2022](#)

# Catchment Area

## Catchment Area

The Academy's catchment area covers Eastwood Park and St Lawrence ward and parts of Belfairs, Blenheim and Prittlewell wards.



Click here for a [Map of Catchment Areas for Secondary Schools](#)

Click here for a postcode check and associated catchment areas: [http://www.southend.gov.uk/downloads/file/3561/catchment\\_area\\_postcode\\_look\\_up\\_table](http://www.southend.gov.uk/downloads/file/3561/catchment_area_postcode_look_up_table)

# Selective Admissions

## Selective Admissions

The Academy offers selective admission in respect to aptitude in **Sport** and **Performing Arts**.

The number of places available is 10% of the PAN i.e. 22 places in total. 11 places are assigned to Sport and 11 places assigned to Performing Arts.

Parents of children with an aptitude in these areas are invited to complete a Supplementary Information Form (SIF) for Sport and/or Performing Arts (refer to Appendix).

The SIF is in a Word format and can be downloaded and e-mailed to the Coordinator for Admissions, [Admissions@eastwood.southend.sch.uk](mailto:Admissions@eastwood.southend.sch.uk) or posted to: **Admissions, The Eastwood Academy, Rayleigh Road, Leigh-on-Sea, Essex, SS9 5UU.**

Only the information requested on the SIF should be provided. Any additional information submitted will not be considered.

SIFs must be completed and returned to the Academy by the **1<sup>st</sup> September**. SIFs received after this date, will not be considered.

The SIF, in itself, is **not** an application form. Applicants still need to complete a Single Application Form (SAF) which is accessed via the Southend Borough Council website – [www.southend.gov.uk](http://www.southend.gov.uk).

Following completion of the SIF, applicants will be required to undertake an assessment of their aptitude (aptitude test).

Aptitude tests take place in September (dates will be published on the website and applicants will be notified). If the applicant is ill or injured on the day of the test, the Academy must be contacted and an alternative day may be offered.

Following completion of the aptitude test, applicants will be informed, in writing, prior to 31<sup>st</sup> October, of their ranking in Sport and/or Performing Arts.

SIF

SIF



*Believe, Succeed, Together*

Supplementary Information Form (SIF)  
September 2022 Entry

Child Details		
Surname:	<div style="border: 1px solid black; width: 100px; height: 100px; display: flex; align-items: center; justify-content: center;">           PHOTO         </div>	
Forename:		
Middle Names:		
Date of Birth:		
Parent Details		
Surname:	Forename:	Telephone:
Address (including postcode):		
Email:		
Aptitude		
(Place a X in one or both boxes)		
Sport	Performing Arts	
Please return this completed from by 1 <sup>st</sup> September 2021	Admissions The Eastwood Academy, Rayleigh Road Leigh-on-Sea, Essex, SS9 5UU <a href="mailto:Admissions@eastwood.southend.sch.uk">Admissions@eastwood.southend.sch.uk</a>	
Declaration		
I confirm, to the best of my knowledge, that the information contained in this SIF is correct.		
Signed:	Date:	

# Random Allocation

## Random Allocation

In the case of oversubscription in any one criterion (with the exception of criterion 3) places are allocated **randomly**.

The principle behind random allocation, in the context of oversubscription in any one criterion, is that it provides all applicants with an **equal** chance of obtaining a place.

The random allocation process is organised by the Vice Principal using computer software (the random number function in Excel) and supervised by an individual independent of the Academy.

In the case of criterion 3, applicants are ranked according to their aptitude. The 11 applicants with the highest rank in Sport and Performing Arts are offered a place. If an applicant with a rank within the 11 places available does not take up a place, the place is awarded to the next highest ranked applicant. Where there is more than one applicant with the same score, the ranked position for these applicants is determined by **random allocation**. On each occasion where one of the 11 places is not taken up, and where there is more than one applicant with the same score, random allocation is applied.

# Application

## Admissions Application Form

All parents must complete the **Single Application Form** which is accessed via the Southend Borough Council website –

[https://www.southend.gov.uk/info/200176/school\\_admissions/47/secondary\\_school\\_admissions](https://www.southend.gov.uk/info/200176/school_admissions/47/secondary_school_admissions)

Deadline Day - **31<sup>st</sup> October 2021.**

 **Contact Schools and Learning**

Tel: 01702 215007

[council@southend.gov.uk](mailto:council@southend.gov.uk)